

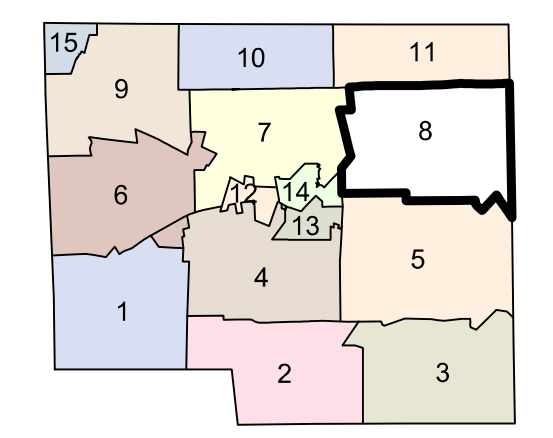
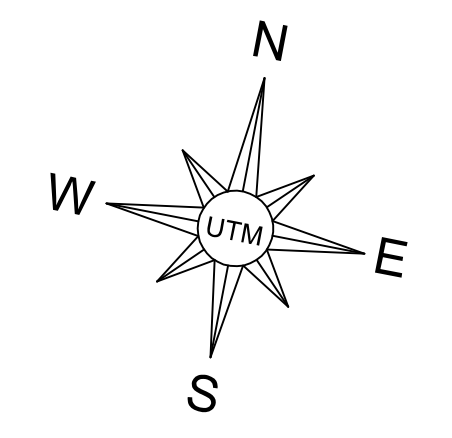
**MAP 11**

**MAP 7**

**MAP 7**

**MAP 5**

**MAP 5**



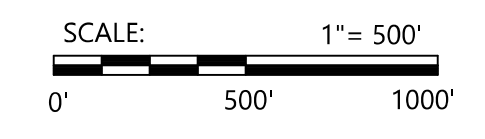
**NEWPORT**

TOWN OF  
**PALMYRA**  
SOMERSET  
COUNTY

STATE OF MAINE

**TAX MAPS**

FEBRUARY 2021



FOR TAX ASSESSMENT PURPOSES ONLY.  
NOT TO BE USED FOR CONVEYANCES OR  
PROPERTY LINE DETERMINATIONS.  
DISTANCES SHOWN WERE COPIED  
FROM PREVIOUS TAX MAPS AND  
HAVE NOT BEEN VERIFIED.

REVISION HISTORY	

Compiled by:  
**WEBBER SURVEYING** Inc.  
220 DOVER ROAD, CHARLESTON, MAINE 04422 TEL: 285-7400

MAP NUMBER:

**8**